




YUMA COUNTY AIRPORT AUTHORITY, INC.
YUMA INTERNATIONAL AIRPORT (NYL)
Title VI Plan - FFY 2024-2026
Title VI Policy Statement

The Yuma County Airport Authority, Inc./ Yuma International Airport assures that no person shall on the grounds of race, color, national origin (including limited English proficiency (LEP)), sex (including sexual orientation and gender identity), creed, or age, as provided by Title VI of the Civil Rights Act of 1964, the Civil Rights Restoration Act of 1987 (PL 100.259), Section 520 of the Airport and Airway Improvement Act of 1982, and related authorities (hereafter, “Title VI and related requirements”), be excluded from participation in, be denied the benefits of, or be otherwise subjected to discrimination under any program or activity that receives U.S. Department of Transportation (DOT) funding. Title VI also prohibits retaliation for asserting or otherwise participating in claims of discrimination.

The Yuma County Airport Authority, Inc./ Yuma International Airport further assures every effort will be made to ensure nondiscrimination in all of its programs and activities, whether those programs are federally funded or not, including any programs or activities of our sub-recipients. The Airport Sponsor agrees, among other things, to understand the communities surrounding or in the flight path, as well as customers that use the airport. Anytime communities may be impacted by programs or activities the **Yuma County Airport Authority, Inc., Yuma International Airport** will take action to involve them and the general public in the decision-making process.

The Yuma County Airport Authority, Inc./ Yuma International Airport requires nondiscrimination assurances, as prescribed by FAA, from each tenant, contractor, and concessionaire providing an activity, service, or facility at the airport. Assurances must be included in any related lease, contract, or franchise agreement between the **Yuma County Airport Authority, Inc./ Yuma International Airport** and each tenant, contractor, and concessionaire, as well as in any similar agreements with their own sub-tenants and sub-contractors.

The Yuma County Airport Authority, Inc./Yuma International Airport Title VI Coordinator, Gabriela Reyes, is responsible for overseeing the Airport Sponsor's compliance with Title VI and is the point of contact for all airport Title VI matters and related responsibilities, including those required by 49 CFR Part 21. Gabriela Reyes may be reached by telephone at (928) 726-5882 or by email at gabby@yumaairport.com.


Signature
Gladys Brown, C.M., C.A.E.
Airport Director

8 APRIL 2024
Effective Date

[Effective Date plus 3 years]
3-Year Expiration Date

2. Administration

The Yuma County Airport Authority, Inc. has reviewed and adopted this Title VI Plan for **Yuma International Airport**. This plan will be updated no less than once every three (3) years. The plan will not be re-adopted following minor changes, such as updating the Airport Director or Coordinator's name. Significant revisions to policies or federal guidelines may warrant re-adoption by the **Yuma County Airport Authority, Inc.** and resubmittal to FAA.

In addition to the Coordinator and airport sponsor's leadership, the following people also assist with our Title VI program requirements:

Staff Supporting Title VI Program	Airport Sponsor Program / Office
Sandra Mendivil	Finance & Human Resources
Gerald L. Hinkle, CPA	Chief Financial Officer
Gen Grosse	Property & Community Relations

Yuma County Airport Authority, Inc. has the following airport program sub-recipients¹

Sub-Recipients
Yuma International Airport (NYL)

As of the date of this plan, **Yuma County Airport Authority, Inc.** has the following pending applications for Federal financial assistance:

Federal Source	Grant Number	Amount
2024 FAA Entitlement – Construct Taxiway F	Unknown	\$3,642,400
2024 FED BIL Funds – Airport Security	Unknown	\$1,183,780
2024 – FAA Entitlement – Airport Terminal Flooring	Unknown	\$1,140,000
2025 FAA Entitlement - Design Terminal Apron	Unknown	\$ 591,890
2026 FAA Entitlement/ Partial Carryover – Construct Terminal Apron	Unknown	\$1,200,000.00
2026 FAA Discretionary (Same as Above)	Unknown	\$6,606,000
2026 FED BIL Funds (Same as Above)	Unknown	\$1,300.000

In addition, **Yuma International Airport's** sub-recipients have the following pending applications for Federal financial assistance (either directly from the FAA, or passed through the State DOT):

Federal Source	Grant Number	Amount
None		

¹Sub-recipient means a non-Federal entity that receives a subaward from a pass-through entity to carry out part of a Federal program; but does not include an individual that is a beneficiary of such a program.

Updated information for pending and awarded grant applications will be available through the following methods:

Federal Source	Grant Award Information Available at:
BIPARTISAN INFRASTRUCTURE LAW (BIL)	www.USgrantsinfo.net
FAA AIP	https://www.faa.gov/airports/aip/

3. Grant and Procurement Assurances

49 CFR § 21.7 (a)(1); 49 CFR Part 21 Appendix C (b)

The Yuma County Airport Authority, Inc./Yuma International Airport will complete standard grant assurances for Title VI and related requirements, in the form prescribed by FAA. See, as a reference:

https://www.faa.gov/airports/aip/grant_assurances/#current-assurances.

Clauses/Covenants

- a. All contracts, leases, deeds, licenses, permits, and other similar instruments, must contain the contractual requirements and clauses, in the form prescribed by FAA:
[See https://www.faa.gov/airports/aip/procurement/federal_contract_provisions](https://www.faa.gov/airports/aip/procurement/federal_contract_provisions)
- b. Note that unlike many other clauses, Civil Rights clauses are required in all contracts.
Note also special clauses that are required for certain types of contracts, such as land acquisition.
- c. **The Yuma County Airport Authority, Inc.** requires Civil Rights clauses to be included in solicitations and contracts for all subcontractors, subleases, and any other agreements.

Description of Oversight Methods for Subcontracts

The following provisions are included in all Yuma County Airport Authority, Inc., Construction Contract Documents:

Civil Rights – General Provisions - Title 49 USC § 47123

Civil Rights - Title VI Assurances - 49 USC § 47123, FAA Order 1400.11

Compliance with Law: The Contractor must comply with all federal, state, and local laws and ordinances applicable to its performance under this contract. The Contractor will comply with the Americans with Disabilities Act (ADA) and will indemnify the Owner for any costs, including, but not limited to, damages, attorney's fees, and staff time in any action or proceeding brought, alleging violation of the ADA. The Contractor will not discriminate against any person on the basis of race, religion, color, age, sex, or national origin in the performance of this Contract, and must comply with the terms and intent of Title VI of the Civil Rights Act of 1964, P.L. 88-354 (1964).

In addition, the Contractor must include similar requirements of subcontractors in any contracts entered into for performance of the Contractor's obligations under this Contract. The Contractor agrees not to participate in or cooperate with an international boycott, as defined in Section 999 (b)(3) and (4) of the Internal Revenue Code of 1954, as amended, or engage in conduct declared to be unlawful by Arizona state law.

The Yuma County Airport Authority, Inc. (YCAA) provides its prime contractors with clauses pertaining to YCAAs Title VI Plan to incorporated into their subcontracts. The YCAA reviews all subcontracts issued by prime contractors.

4. Title VI Coordinator Responsibilities

The Coordinator is responsible for ensuring that they and other staff supporting Title VI are trained in Title VI requirements. Essential training topics include:

- Basic Title VI requirements
- Airport language assistance resources and practices
- Collecting and assessing demographic data
- Reporting Title VI complaints and other required FAA notifications.

See the Training Section 11 for more information about the expected training for all staff.

Among other responsibilities, the Coordinator:

- Proactively ensures that the Airport Sponsor is in compliance with nondiscrimination requirements of Title VI and reports to **Yuma County Airport Authority, Inc./Yuma International Airport** leadership on the status of Title VI compliances.
- Responds promptly to requests by FAA for data and records and for the scheduling of compliance reviews and other FAA meetings to determine compliance with Title VI and related requirements.
- Receives discrimination complaints covered by Title VI and related requirements, and forwards them to the FAA, within 15 days of receipt, together with any actions taken to resolve the matter.
- Provides the FAA with updates regarding its response and status of early resolution efforts to complaints concerning Title VI and related requirements (49 CFR Part 21, Appendix C (b)(3)), including resolution efforts.
- Annually reviews the airport's Title VI plan and disseminates information throughout staff and the Airport Sponsor's leadership.
- Coordinates data collection to evaluate whether racial or ethnic groups are unequally benefited or impacted by airport programs. The data will be regularly assessed and readily available upon request (49 CFR § 21.9(b) & (c)). Data collection methods will include optional demographic questions in airport customer satisfaction surveys, customer complaints, airport event sign-in sheets, and bids/proposals for airport contracts, and other methods described in the airport Community Participation Plan
- Maintains demographic data for members of appointed planning and advisory bodies for the airport. Identifies any disparities compared to the community. Provides information to the membership selecting official/committee, particularly when vacancies occur.
- Maintains a copy of 49 CFR Part 21 for inspection by any person asking for it during normal working hours (49 CFR 21, Appendix C (b)(2)(i)).
- See Notice, Compliance reviews, Audits, Lawsuits, and Other Investigations, and Complaints Sections of this Plan.

5. Notice

49 CFR Part 21 Appendix C(b)(2)(ii)

The Yuma County Airport Authority, Inc./Yuma International Airport will conspicuously display the FAA-provided Unlawful Discrimination Poster in all public areas on airport property, including those with pedestrian activity. The Coordinator ensures that these posters are visible, accessible,¹ and maintained. The poster template is available at https://www.faa.gov/about/office_org/headquarters_offices/acr/com_civ_support/non_disc_pr/ and a completed copy is attached. See Section 15 Appendix.

The Yuma County Airport Authority, Inc. has posted the above Title VI policy statement at its staff offices.

The Yuma County Airport Authority, Inc. will distribute this Title VI Plan among its employees and airport contractors, concessionaires, lessees, and tenants. This plan will be distributed by April 1, 2024, via email and at tenants meeting.

Posters are displayed in the terminal and other areas on airport property, including the following public locations:

Terminal/FBO/Concessions/ Other Locations	Quantity in Pre-Security Area	Quantity in Post-Security Area	Additional Quantities
Terminal Building	4	2	
Car Rental Center – 4 Rental Agencies	1(Each Rental Counter)	1	
FBO - Million Air (Yuma)	1(Each Location)	1	
Pappy Boyington Hangar	1	1	
Joe Foss Hangar	1	1	
Amelia Earhart Hangar	1	1	
Airfield Office Space “Taz”	1	1	

Outreach to Affected Communities:

Title VI Coordinator, Gabriela Reyes ensures that notices for public meetings reach all segments of the impacted community. The Title VI coordinator will identify effective media platforms to share announcement and notices. Announcements are made in social media, general circulation newspapers, community newspapers, email broadcast, and AM/FM Local Radio Stations. The Office of the Title VI Coordinator contacts leaders and representatives in Affected Communities directly to confirm effective media platforms to reach all Affected Communities and provide important feedback on translated materials. The office maintains records of all such notices and the efforts made to reach each of the Affected Communities.

The Yuma Airport Authority Inc./Yuma International Airport will create a detailed Community Participation Plan (CPP) by June 1, 2024. A copy of the plan will be available at: <https://flyyuma.com/>

To ensure that the community is effectively informed of and able to participate in public hearings, the Title VI Coordinator, Gabriela Reyes will include public notices translated into appropriate languages, including for any language spoken by a significant number or proportion of the Affected Community population that has limited English proficiency (LEP).

Such social media postings and notices will include direction for obtaining an interpreter, free of charge, for public hearings [28 CFR § 42.405(d)]. See Limited English Proficiency (LEP) Section.

6. Community Statistics

Title VI regulations require Federal grant recipients to know their community demographics. See 49 CFR § 21.9(b). By knowing this information, **Yuma County Airport Authority, Inc./Yuma International Airport** will be able to identify, understand, and engage with communities. In doing so, the **Yuma County Airport Authority, Inc./Yuma International Airport** needs to know about communities eligible to be served, actually or potentially affected, benefited, or burdened by Airport Sponsor’s airport program.

Yuma International Airport is located within a complex and diverse community. As a shared use Airport with Marine Corps Air Station Yuma (MCAS Yuma), there is a combination of military activities, industrial warehouses, residential subdivisions, RV Parks, tribal lands, and farming operations, all within proximity of the Airport. The Affected Communities are shown visually on Appendix B and are based on civilian aircraft operations, (commercial, private, and general aviation activities) and correlated through navigational flight procedures, and established noise contours.

Affected Communities²	Total Population
US Census Tract 7 – Mesa Heights	3681
US Census Tract 8 - Vista Del Valle	5281
US Census Tract 9.01 – El Pueblcito	3439
US Census Tract 9.07 – Hacienda Estates	5749
US Census Tract 9.08 – Debra Jean Estates	4227
US Census Tract 10.01 – Dunes/Desert Holiday RV	2600
US Census Tract 10.03 – Palmcroft Estates	822
US Census Tract 10.04 – Westridge Estates	2233
US Census Tract 11 – La Verne Terrace	5753
US Census Tract 12 – San Marcos Villas/Ironwood	3677

(Hereafter, the above communities will be referred to collectively as “the Affected Communities”).

We have identified the following facts about the Affected Communities:

Low Income Communities³:

A low-income area is an identifiable group of persons living in geographic proximity, whose median household income is at or below the Department of Health and Human Services poverty guidelines. Pursuant to Executive Order 12898, “Federal Actions to Address Environmental Justice in Minority Populations and Low-Income Populations,” the Yuma County Airport Authority, Inc./Yuma International Airport is collecting information about affected and

² “Affected communities” means any readily identifiable group potentially impacted by an airport project or operation, such as the community immediately surrounding a project or a community in the flight path.

³ Low-income data must be collected to assist in our compliance with Environmental Justice requirements (not Title VI requirements). For example, this data will be utilized in our Community Participation Plan (CPP) to help ensure the meaningful involvement of low-income communities in airport programs and activities.

potentially affected low-income communities. According to the 2020 **U.S. Census Report, as noted by S1701: Poverty Status in the Past 12 Months**], the overall poverty level for the identified Affected Communities ranges from a high of 31.2% to a low of 2.6% . The poverty rate remains similar compared with the rest of the Yuma Metropolitan Planning Organization data for poverty rates in their jurisdiction area. The poverty rates for the specific Affected Communities are as follows:

Affected Communities	Poverty Rate
US Census Tract 7 – Mesa Heights	32.9%
US Census Tract 8 - Vista Del Valle	19.3%
US Census Tract 9.01 – El Pueblcito	20.2%
US Census Tract 9.07 – Hacienda Estates	20.5%
US Census Tract 9.08 – Debra Jean Estates	2.6%
US Census Tract 10.01 – Dunes/Desert Holiday RV	14.8%
US Census Tract 10.03 – Palmcroft Estates	28.3%
US Census Tract 10.04 – Westridge Estates	31.2%
US Census Tract 11 – La Verne Terrace	19.9%
US Census Tract 12 – San Marcos Villas/Ironwood	5.7%

Data Source: U.S. Census Bureau. "POVERTY STATUS IN THE PAST 12 MONTHS."
American Community Survey, ACS 5-Year Estimates Subject Tables, Table S1701, 2020

Racial and Ethnic Communities

Demographic data for race, color, and national origin was evaluated to identify racial and ethnic communities and populations in each Affected Community. The demographic composition by race, color, or national origin for the specific Affected Communities are as follows:

Affected Community: US Census Track 7
Total Affected Community Population: 3681

Demographic Group within Affected Community	Number of People in Minority Group	Percent of Total Affected Community Population
White alone	2415	36.1
Black or African American alone	234	37.2
American Indian or Alaska Native alone	0	-
Asian alone	47	34.0
Native Hawaiian or Other Pacific Islander alone	0	-
Some other race alone	493	43.4
Two or more races	492	4.7
Hispanic or Latino Origin (of any race)	3040	36.8
White alone, not Hispanic or Latino	484	19.4

Affected Community: US Census Track 8
Total Affected Community Population: 5281

Demographic Group within Affected Community	Number of People in Minority Group	Percent of Total Affected Community Population
White alone	4002	20.3
Black or African American alone	88	13.6
American Indian or Alaska Native alone	0	-
Asian alone	180	0.6
Native Hawaiian or Other Pacific Islander alone	0	-
Some other race alone	349	40.1
Two or more races	662	8.0
Hispanic or Latino Origin	3474	23.1
White alone, Not Hispanic or Latino	1433	12.8

Affected Community: US Census Tract 9.01

Total Affected Community Population: 3439

Demographic Group within Affected Community	Number of People in Minority Group	Percent of Total Affected Community Population
White alone	2639	16.0
Black or African American alone	230	58.3
American Indian or Alaska Native alone	124	56.5
Asian alone	12	0.0
Native Hawaiian or Other Pacific Islander alone	0	-
Some other race alone	147	6.1
Two or more races	287	20.2
Hispanic or Latino Origin	1717	30.3
White alone, Not Hispanic or Latino	1476	7.0

Affected Community: US Census Tract 9.07

Total Affected Community Population: 5749

Demographic Group within Affected Community	Number of People in Minority Group	Percent of Total Affected Community Population
White alone	4112	19.2
Black or African American alone	454	13.4
American Indian or Alaska Native alone	132	88.6
Asian alone	247	0.0
Native Hawaiian or Other Pacific Islander alone	0	-
Some other race alone	380	9.5
Two or more races	424	41.0
Hispanic or Latino Origin	3785	24.5
White alone, Not Hispanic or Latino	1190	13.1

Affected Community: <u>US Census Tract 9.08</u> Total Affected Community Population: <u>4227</u>		
Demographic Group within Affected Community	Number of People in Minority Group	Percent of Total Affected Community Population
White alone	2688	4.1
Black or African American alone	257	0.0
American Indian or Alaska Native alone	7	0.0
Asian alone	228	0.0
Native Hawaiian or Other Pacific Islander alone	4	0.0
Some other race alone	426	0.0
Two or more races	617	0.0
Hispanic or Latino Origin	2256	3.1
White alone, Not Hispanic or Latino	1360	2.9

Affected Community: <u>US Census Tract 10.01</u> Total Affected Community Population: <u>2600</u>		
Demographic Group within Affected Community	Number of People in Minority Group	Percent of Total Affected Community Population
White alone	2076	15.3
Black or African American alone	33	0.0
American Indian or Alaska Native alone	55	0.0
Asian alone	21	0.0
Native Hawaiian or Other Pacific Islander alone	18	0.0
Some other race alone	236	28.8
Two or more races	161	0.0
Hispanic or Latino Origin	951	23.0
White alone, Not Hispanic or Latino	1515	11.0
	2076	15.3

Affected Community: <u>US Census Tract 10.03</u> Total Affected Community Population: <u>822</u>		
Demographic Group within Affected Community	Number of People in Minority Group	Percent of Total Affected Community Population
White alone	508	26.8
Black or African American alone	2	100.0
American Indian or Alaska Native alone	0	-
Asian alone	11	100.0
Native Hawaiian or Other Pacific Islander alone	6	0.0
Some other race alone	231	36.4
Two or more races	64	0.0
Hispanic or Latino Origin	560	25.0
White alone, Not Hispanic or Latino	249	32.1

Affected Community: <u>US Census Track 10.04</u> Total Affected Community Population: <u>2233</u>		
Demographic Group within Affected Community	Number of People in Minority Group	Percent of Total Affected Community Population
White alone	1433	43.8
Black or African American alone	48	33.3
American Indian or Alaska Native alone	108	0.0
Asian alone	47	10.6
Native Hawaiian or Other Pacific Islander alone	0	-
Some other race alone	497	9.3
Two or more races	100	4.0
Hispanic or Latino Origin	1631	33.3
White alone, Not Hispanic or Latino	486	27.6

Affected Community: <u>US Census Track 11</u> Total Affected Community Population: <u>5753</u>		
Demographic Group within Affected Community	Number of People in Minority Group	Percent of Total Affected Community Population
White alone	3913	17.2
Black or African American alone	47	2.1
American Indian or Alaska Native alone	36	100.0
Asian alone	0	-
Native Hawaiian or Other Pacific Islander alone	0	-
Some other race alone	1311	24.9
Two or more races	446	23.8
Hispanic or Latino Origin	3985	18.5
White alone, Not Hispanic or Latino	1669	22.9

Affected Community: <u>US Census Track 12</u> Total Affected Community Population: <u>3677</u>		
Demographic Group within Affected Community	Number of People in Minority Group	Percent of Total Affected Community Population
White alone	2445	7.6
Black or African American alone	5	0.0
American Indian or Alaska Native alone	23	47.8
Asian alone	87	0.0
Native Hawaiian or Other Pacific Islander alone	0	-
Some other race alone	294	4.1
Two or more races	823	0.0
Hispanic or Latino Origin	1771	1.6
White alone, Not Hispanic or Latino	1586	10.8

Limited English Proficiency (LEP)

The goal of all language access planning and implementation is to ensure that **Yuma County Airport Authority, Inc./Yuma International Airport** communicates effectively with limited English proficient (LEP) individuals. Effective language access requires self-assessment and planning. The next table lists non-English languages that are spoken in LEP households in the Affected Communities. The data source is **American Community Survey, Data Statistics, Data Tables B16004. (See Appendix C)**

The threshold used for identifying the languages with significant LEP populations is the DOT LEP Policy Guidance safe harbor threshold.⁵ The total population of the Affected Communities are greater than 20,000, therefore a Safe Harbor for the community affected by NYL is 1,000. See Appendix B at the end of this document to find data for all languages in the community.

Languages Spoken by LEP Population that Meet the Safe Harbor Threshold (not well and not at all)	Number
Spanish	3182

See Table B16004: Language Spoken at Home by Ability to Speak English, Less Than Well, Not at All. (See Appendix C)

Frequency of contact with LEP individuals at the **Yuma County Airport Authority, Inc./Yuma International Airport** and airport-related activities (all languages):

Languages Spoken by LEP Persons	A few times a year (12 or less days a year)	Several times a month (13 to 51 days a year)	At least once a week (52 to 364 days a year)	Every day (365 days a year)
Spanish				X

Additional languages spoken by significant numbers of LEP persons in the Affected Communities, local schools, emergency service providers, and others.

Additional Languages Spoken
None

This information is updated annually through checking the following resources: Data should be kept up to date, but this plan does not need to be updated for incremental data changes during the Plan's 3-year period.

⁴The LEP Safe Harbor Threshold provision stipulates that for each LEP group that meets the LEP language threshold (5% or 1,000 individuals, whichever is less, of the population to be served) Sponsor must provide translation of vital documents.

Data Sources for Languages Spoken in Affected Community	Website link to Data Source
U.S. Census Bureau	https://data.census.gov/cedsci/table?q=B16001&tid=ACSDT1Y2019.B16001
Yuma School District 1	https://www.yuma.org/Language_Acquisition
Western Arizona Council of Governments (WACOG)	https://www.wacog.com/
Yuma Metropolitan Planning Organization	https://ympo.org/
State of Arizona – Data USA	https://datausa.io/profile/geo/arizona
Cocopah Indian Tribe	http://www.ontherez.org/administration.html

Beneficiary Diversity

Demographic information will be collected from airport customers, attendees at community meetings, and businesses seeking opportunities at the airport, through voluntary disclosures, on a case-by-case basis.

Description of Beneficiary Demographic Information Collection Methods
<ul style="list-style-type: none"> • The Airport Customer Service Office conducts biannual surveys of airport guests for customer satisfaction with airport concessions, restroom cleanliness, food offerings, and other elements and services. The survey includes a voluntary request for demographic information. • Participants at small business workshops, pre-bid meetings, and other public meetings are asked to complete an anonymous survey that includes demographic information. • Businesses that submit bids or offers are asked to complete an anonymous survey that includes demographic information, submitted through a data collection website.

Staff and Advisory Board Diversity:

Demographic information is collected from airport program employees and members of planning and advisory boards, through voluntary disclosures, on a case-by-case basis.

Description of Employee and Advisory Board Demographic Information Collection Methods
<ul style="list-style-type: none"> • Employees are asked to submit voluntary confidential demographic information at time of hiring. • Job applicants are asked to submit the same information when submitting their job application through the job application website. • Every 3 years, the airport administration sends an email to all board members asking them to enter demographic information voluntarily and anonymously through an online survey.

7. Potential or Known Community Impacts

Projects or services receiving federal financial assistance have the potential to touch so many aspects of American life. Thus, in general, no Yuma County Airport Authority, Inc./Yuma International Airport activity must have a discriminatory disparate impact on the basis of race, color, national origin (including LEP), sex (including sexual orientation and gender identity), creed, or age. This means that policies or procedures that have a disparate impact would require a well-documented substantial legitimate nondiscriminatory justification, summarized below. Impacts to protected communities must be avoided or minimized to the extent possible. No project with a discriminatory impact on protected communities will be undertaken.

The following airport facilities are already in use or under construction and expected to be in use within the next 3 years:

Existing Airport Facilities	Affected Community Impacted by Operation of the Facility
None	

The following airport facility projects (including all alternatives) are in construction or expected to be in construction within the next 3 years:

Airport Facility Construction Projects	Affected Community Impacted by Construction of the Facility
2024 – Construct Taxiway F-1	Communities along materials hauling routes
2024 – Airport Security	None
2024 – Terminal Flooring Project	Communities along materials hauling routes
2025 – Design Terminal Apron	None
2026 – Construct Terminal Apron	Communities along materials hauling routes

We have analyzed the above existing facilities and facility construction projects for disparate impacts on the basis of race, color, or national origin (including LEP) in Affected Communities. The following have disparate impacts:

Facilities or Construction Projects with Disparate Impacts	Affected Community Impacted	Impact Can Be Eliminated?
2024 – Construct Taxiway F-1	Communities along materials hauling routes.	No - Mitigated through CPP, Signage in the predominant language of the community
2024 Terminal Flooring Project	Communities along materials hauling routes.	No - Mitigated through CPP,

2026 – Construct Terminal Apron	Communities along materials hauling routes	No - Mitigated through CPP, Signage in the predominant language of the community
---------------------------------	--	--

Justifications:

Construction Projects	Justification
2024 – Construct Taxiway F1.	Correct taxiway alignment to remove direct access taxiway connector to mitigate the potential for runway incursions at Taxiway F1
2024 Terminal Flooring Project	Modernization - Replace old and worn-out flooring materials, improve visual effects
2026 - Construct Terminal Apron	Improved capacity and repair existing pavement

8. Limited English Proficiency (LEP)

Executive Order 13166

In creating a Language Assistance Plan, the **Yuma County Airport Authority Inc./Yuma International Airport** will consider the volume, proportion, or frequency of contact with LEP persons in determining the appropriate language assistance to provide.

In the Community Statistics, Section 6, **Yuma Airport Authority Inc./Yuma International Airport** identified the following languages spoken by LEP persons in Affected Communities and language that meet the Safe Harbor threshold and languages that are frequently encountered:

Language
Spanish

Yuma Airport Authority Inc./Yuma International Airport does not collect data for languages spoken by airport guests. Data sources include:

Data Sources for Languages Spoken by Airport Guests	Website link to Data Source
None	

Based on the above data, the following additional languages have been identified as likely to be spoken by LEP airport guests:

Language
None

The Title VI Coordinator will also actively engage with community educators, community groups, places of work, business groups, social groups, and the like to confirm that translation and interpretation services are accurate and effective.

Additionally, the Title VI Coordinator will inform leadership and staff of the **Yuma County Airport Authority Inc./Yuma International Airport** of the responsibility to provide language access.

The **Yuma County Airport Authority Inc./Yuma International Airport** plans to provide translation services free of charge to ensure that individuals with LEP have access to the benefits of the airport:

Translation Services:

- All written notices contain a statement in the identified languages, when appropriate, of how to receive translated written materials.
- The following vendors have been identified for written translations:

Translation Vendors	Languages
None – In house volunteers	Spanish
YCAA Employees	Multiple languages*
International Student Club at Arizona Western College	Multiple languages*
Latter Day Saints Church	Multiple languages*

*Spanish, French, Portuguese, Russian and additional languages

- Information regarding translation services can be obtained at:

Location for Translation Assistance	Languages
Volunteer multi-lingual staff pool	Spanish

Interpretation Services:

- The following vendors have been identified for interpretation services:

Interpretation Vendors	Languages
None	

- Information regarding interpretation services can be obtained at:

Location for Interpretation Assistance	Languages
None	

9. Transportation

49 Part CFR 21 Appendix C (a)(1)(ix)

In the Community Statistics section of this plan, the Yuma County Airport Authority, Inc./Yuma International Airport identified Affected Communities and provided demographic and related data for the community populations. The minority and disadvantaged community areas located within the Affected Communities were identified. Other minority and disadvantaged community areas that are near the airport but not within Affected Communities are identified below.

The Yuma County Intergovernmental Public Transportation Authority provides Yuma City and County wide connections to Yuma International Airport through a complex network of bus routes. In particular the Green Route 4 – Central Yuma Circulator via Pacific Avenue, provides a direct stop at Yuma International Airport (by request) for central Yuma connectivity.

The following chart identifies existing and transit services connecting the airport employment centers with the identified minority and disadvantaged community areas (Appendix E).

Minority and/or Disadvantaged Community Areas	Transit Service	Planned or Existing
Wellton, AZ	YCAT System - Yellow Line	Existing
Avenue B and C – City of Yuma	YCAT System – Gold Route 8 Flex Zone	Existing
Somerton, AZ	YCAT System - Gold Route 8 Flex Zone	Existing
San Luis, AZ	YCAT System - Gold Route 8 Flex Zone	Existing

10. Minority Businesses
49 CFR 21 Appendix C (a)(1)(x)

Bids for airport concessions and other business opportunities are solicited from area minority and woman-owned businesses through the following methods:

Airport Business Opportunity	Minority Business Outreach Methods
Rental Car Facilities	Advertised through all local chambers of commerce, minority and woman owned business outreach email list
Parking Lot Operations Contract	Followed procedures for State Minority and Woman Owned Business Enterprise Program
Food and Beverage	Bids required to include Disadvantaged Business Enterprise (DBE) opportunities and mentor component for sub-contractors

Selections are in compliance with Title VI, Part 21, and related requirements. Information on the award process and documentation for specific bid decisions is kept within the Yuma County Airport Authority, Inc./Yuma International Airport's Administration Department.

11. Training

New employee orientation incorporates Title VI training which will include:

- 1 Title VI and related laws prohibit discrimination on the basis of race, color, national origin (including LEP), sex (including sexual orientation and gender identity), creed, or age
- 2 Title VI complaints procedures and forwarding to the Coordinator
- 3 Protections against retaliation for filing civil rights complaints or related actions
- 4 Title VI notices displayed requirements throughout the airport public facilities
- 5 Discussion of contract requirements and Title VI clauses
- 6 Language interpretation and translation services
- 7 Cultural and community relations sensitivity training
- 8 Anti-harassment training

Refresher information will be provided annually.

12. Compliance Reviews, Audits, Complaints, Lawsuits, and Other Investigations

FAA Notification. The Title VI Coordinator will notify the FAA of any pending investigations and reviews, including:

- Compliance reviews or audits concerning civil rights requirements.
- Complaints, lawsuits, or other investigations alleging noncompliance with civil rights requirements, including allegations of discrimination based on race, color, national origin (including LEP), sex (including sexual orientation and gender identity), creed, or age, whether because of actions of the airport sponsor itself, or its employees, contractors, or tenants. Includes noncompliance with related administrative requirements under civil rights laws.
- Any Title VI, ADA, Sec. 504, Title VII/EEO, or other civil rights program compliance review or audit to be performed on the airport sponsor or any of its sub-recipients by any State, local or Federal agency.

As discussed in the Title VI Complaints Section, Title VI complaints must be forwarded to FAA contacts within 15 days of receipt. For all other civil rights investigations, the **Yuma County Airport Authority, Inc./Yuma International Airport** must notify FAA contacts of any new investigations prior to grant execution.

At regular intervals, the Coordinator will provide FAA contacts with status updates for the investigations and reviews, until completed. For each existing investigation or review completed within 5 years of this plan, the Coordinator will also provide a statement about the outcome, unless previously provided.

13. Title VI Complaints

49 CFR 21.11; 49 CFR 21 Appendix C (b)(3); 28 CFR 42.406(d)

Complaints:

These procedures are for complaints of discrimination under Title VI and related laws (hereafter “Title VI Complaints.” In order to be a Title VI Complaint, the complaint must:

1. Allege discrimination on the basis of race, color, national origin (including LEP), sex (including sexual orientation and gender identity), creed, or age or violations administrative requirements under Title VI or related laws.
2. Complaints of employment discrimination must be addressed as required by Equal Employment Opportunity Commission (EEOC) and other applicable authorities with jurisdiction over employment matters. If an Airport sponsored employment activity is supported by FAA-provided financial assistance or it is alleged that the employment discrimination affects the broader airport program, complaints about that activity must also be reported to FAA.
3. Allege misconduct by the **Yuma County Airport Authority, Inc./Yuma International Airport** including airport employees, contractors, concessionaires, lessees, or tenants.
4. Concerning an airport facility or actions by the **Yuma County Airport Authority, Inc./Yuma International Airport** including airport employees, contractors, concessionaires, lessees, or tenants.

Rights:

Any person who believes that he or she has been subjected to discrimination on the basis of race, color, national origin (including LEP), sex (including sexual orientation and gender identity), creed, or age has the right to file a complaint with the **Yuma County Airport Authority, Inc./Yuma International Airport**. Alternatively, they can file a formal complaint with an outside agency, such as the U.S. Departments of Justice or Transportation, or the Federal Aviation Administration (FAA), or seek other legal remedies.

Receipt of Complaint:

The Title VI Coordinator will log in the complaint and promptly send copies of the complaint to the office named in the complaint and the Airport Director. Complaints must be filed within **180** days of the discriminatory event, must be in writing, and must be delivered to:

Yuma County Airport Authority, Inc.
Attn: Gabriela Reyes, Title VI Coordinator
2191 E 32nd St #218, Yuma, AZ 85365
(928) 726-5882 Extension 2135
gabby@yumaaairport.com

If a complaint is initially made by phone, it must be supplemented with a written complaint within 180 days after the discriminatory event has passed. If a verbal complaint is received, the complainant should be given a copy of the Airport Discrimination Complaint Procedures and instructed to submit a written complaint. Accommodation will be provided upon request for individuals unable to file a written complaint due to their disability.

Investigative Procedures

The Title VI Coordinator may meet with the complainant to clarify the issues, obtain additional information, and determine if informal resolution might be possible in lieu of an investigation. If successfully resolved, the Title VI Coordinator will issue a closure letter to the complainant, record the disposition in the complaints log, and report the resolution to FAA.

Internal Complaint Referral:

All Title VI complaints must be promptly forwarded to the Title VI Coordinator within **3 business days**.

Initial FAA Notification:

A copy of each Title VI complaint will be forwarded to the FAA within **15 business days** of initial receipt (not the date that the Title VI Coordinator was notified). The Title VI Coordinator will forward a copy of the complaint and a statement describing all actions taken to resolve the matter, and the results thereof, to the FAA Civil Rights staff. (Note: complaints based on disability do not have to be forwarded to FAA.)

To transmit complaint information to the FAA, the Title VI Coordinator will upload the information to the FAA Civil Rights Connect System, which issues automated notifications to FAA staff. The Title VI Coordinator will also seek technical assistance from FAA, as needed, throughout complaint intake, investigation and resolution process.

Assignment of Investigator:

The Title VI Coordinator will immediately begin the investigation or designate an investigator. When an investigator is designated, the Title VI Coordinator will provide assistance and information for the investigation.

Cooperation with FAA:

The Title VI Coordinator will promptly investigate all Title VI complaints, including those referred by the FAA for investigation. If the FAA is investigating a complaint against the **Yuma Airport Authority, Inc./Yuma International Airport**, the Title VI Coordinator will avoid interfering with the FAA investigation, cooperate with the FAA when needed, and share factual information with the FAA.

Prompt Investigation:

The Title VI Coordinator will make every effort to complete discrimination complaint investigations within **60 calendar days** after the complaint is received. Some investigations may

take longer with a justification for the delay and assurance that the investigation is being completed as quickly as possible.

Contact with Complainant:

The Title VI Coordinator will meet with the complainant to clarify the issues and obtain additional information, and also speak with community members and potential witnesses, as appropriate.

Investigation Report:

After completing the investigation, the Title VI Coordinator will prepare a written report.

Consultation with Legal Counsel:

In each case, the Title VI Coordinator will consult with Legal Counsel regarding the investigation and the report. Airport Legal Counsel will ensure that the report is consistent with the DOT and FAA Title VI nondiscrimination requirements.

Prompt Resolution of Disputes:

The Title VI Coordinator will emphasize voluntary compliance and quickly and fairly resolve disputes with complainants, or with contractors, tenants, or other persons. The **Yuma County Airport Authority, Inc./Yuma International Airport** will use the following language, as outlined in their current contracts, including construction documents and lease agreements.:

*“Claims, disputes or other matters in question between the parties in relation to this Contract or breach thereof may be decided by **arbitration in accordance with the Arizona Uniform Rules of Procedure for Arbitration** if the parties mutually agree. Demand for arbitration must be filed in writing with the other party of this **Agreement**” – Construction Contract Language*

The Yuma County Airport Authority, Inc. may cancel a lease agreement, at any time, in the event the Lessee shall:

- A. Be in arrears in the payment.....*
- B. Make an assignment for benefit of creditors*
- C. Abandon the Premises*
- D. File a voluntary petition in bankruptcy*
- E. Fail to repair.....*

The Yuma County Airport Authority, Inc. may also cancel a Lease Agreement due to requirements of the County of Yuma.

*In event of any disputes, the parties are entitled to **seek judicial review for determination – Master Lease Agreement***

Forwarding Report and Response to Complainant:

At the completion of the investigation, the complainant and respondent will receive a letter of findings and determination of the investigation and any applicable resolution. The letter transmitting the findings and any applicable resolution will state the **Yuma County Airport Authority, Inc./Yuma International Airport’s** conclusion regarding whether unlawful

discrimination occurred and will describe the complainant's appeal rights. A summary of the investigation report, any appeal, or follow-up actions will be sent to the FAA via **the FAA Civil Rights Connect System**.

Appeal Rights:

The complainant must be notified of their right to appeal the findings or determinations, and of the procedures and requirements for an appeal:

- The complainant may appeal in writing to the **Airport Director**.
- The written appeal must be received **within 14** business days after receipt of the written decision.
- The written appeal must contain all arguments, evidence, and documents supporting the basis for the appeal.
- The Airport Director will issue a final written decision in response to the appeal.

Avoiding Future Discrimination:

In addition to taking action with respect to any specific instances of discrimination, the **Yuma County Airport Authority, Inc./Yuma International Airport** will identify and implement measures to reduce the chances of similar discrimination in the future.

Intimidation and Retaliation Prohibited:

The Yuma County Airport Authority, Inc./Yuma International Airport's employees, contractors, and tenants will not intimidate or retaliate against a person who has filed a complaint alleging discrimination.

For information on filing a complaint with DOT/FAA, please contact Gabriela Reyes, Title VI Coordinator.

This complaint procedure is shared with the public through the following methods:

Website, In-person, and Other Distribution Methods

Airport website: Title VI page at <https://flyyuma.com/>

End
Yuma County Airport Authority, Inc./Yuma International
Airport
Title VI Plan FFY 2024-2026

14. Population / Language Data

Appendix A:

Unlawful Discrimination Poster

Appendix B:

Poverty Status in the Past 12 Month - Information for Affected Communities
U.S. Census Report: S1701 Tables **Source:** www.census.gov

Appendix C:

Language Spoken at Home by Ability to Speak English for population 5 years and over. Data is sourced from U.S. Census – American Community Survey (ACS) Tables B16001. **Source:** www.census.gov

Appendix D:

Area of Influence – Community Statistics

Appendix E:

Transit Services – Minority and Disadvantaged Communities

Appendix F:

Selected Definitions

Appendix A

Unlawful Discrimination Poster

Unlawful Discrimination

It is unlawful for airport operators and their lessees, tenants, concessionaires and contractors to discriminate against any person because of race, color, national origin, sex, creed, or disability in public services and employment opportunities. Allegations of discrimination should be promptly reported to the Airport Manager or:

Federal Aviation Administration
Office of Civil Rights, ACR-1
800 Independence Avenue, S.W.
Washington, D.C. 20591

Federal regulations on unlawful discrimination are available for review in the Airport Manager's Office.

Coordinator: Gabriela Reyes Title VI and Sandra Mendivil ADA/504
Phone: (928) 726-5882
Address: Yuma International Airport
22191 East 32nd Street Suite 281
Yuma, Arizona 85365

Discriminacion Ilegal

Se prohíbe a los operadores de aeropuertos y a sus arrendatarios, inquilinos, concesionarios y contratistas discriminar contra cualquier persona por motivo de raza, color, nacionalidad de origen, sexo, creencias religiosas, impedimento físico o discapacidad en lo que respecta a servicios públicos y oportunidades de empleo. Las alegaciones de discriminación deberán ser dirigidas inmediatamente al Administrador del Aeropuerto o a:

Federal Aviation Administration
Office of Civil Rights, ACR-1
800 Independence Avenue, S.W.
Washington, D.C. 20591

Los reglamentos sobre discriminación ilegal están a la disposición de los interesados para su examen en la oficina del Administrador del Aeropuerto.

Coordinador: Gabriela Reyes Title VI and Sandra Mendivil ADA/504
Teléfono: (928) 726-5882
Dirección: Yuma International Airport
22191 East 32nd Street, Suite 281
Yuma, Arizona 85365



U.S. Department of Transportation
Federal Aviation Administration

HQ-101098

Appendix B

Language Spoken at Home by Ability to Speak English for population 5 years and over. Data is sourced from U.S. Census – American Community Survey (ACS) Tables B16001. Source: www.census.gov]

LEP BY CENSUS TRACT
YUMA COUNTY, AZ

	A	B	C	D	E	F	G
1				5 to 17 years			
2							
3							
	GEOID	Census Tract	Total (5 years and over)	Total 5 to 17	Speak only English	Total Speak Spanish	Speak English "very well"
4	geoid	tract	b16004_001e	b16004_002e	b16004_003e	b16004_004e	b16004_005e
5	1400000US04027000700	Census Tract 7	3,173	693	401	292	254
6	1400000US04027000800	Census Tract 8	4,904	620	326	294	243
7	1400000US04027000901	Census Tract 9.01	3,201	559	267	292	272
8	1400000US04027000907	Census Tract 9.07	5,399	1,050	455	541	522
9	1400000US04027000908	Census Tract 9.08	3,828	1,063	848	215	215
10	1400000US04027001001	Census Tract 10.01	2,285	168	107	61	61
11	1400000US04027001003	Census Tract 10.03	863	107	90	17	17
12	1400000US04027001004	Census Tract 10.04	2,271	503	277	212	165
13	1400000US04027001100	Census Tract 11	5,774	1,237	571	666	603
14	1400000US04027001200	Census Tract 12	3,156	519	437	82	82
15	1400000US04027010913	Census Tract 109.13	1,094	91	28	63	44
16	1400000US04027011107	Census Tract 111.07	2,509	559	488	58	29
17	1400000US04027980006	Census Tract 9800.06	3,343	233	233	0	0
18							
19		TOTAL	41,800				
20							
21							
22							
23							
24							
25							
26						56	

LEP BY CENSUS TRACT
YUMA COUNTY, AZ

	AF	AV	AW	AX	AY	AZ	BA	BB
1		65 years and over						
2				Speak Spanish				
3	Speak English "not at all"			Total Speak Spanish	Speak English "very well"	Speak English "well"	Speak English "not well"	Speak English "not at all"
4	b16004_030e	b16004_046e	b16004_047e	b16004_048e	b16004_049e	b16004_050e	b16004_051e	b16004_052e
5	70	564	195	369	55	4	160	150
6	78	892	425	458	294	6	77	81
7	90	713	536	177	90	35	10	42
8	179	818	414	230	65	98	57	10
9	9	319	191	123	80	17	8	18
10	0	1,172	1,114	39	34	5	0	0
11	0	396	227	164	77	7	49	31
12	30	288	145	143	85	22	10	26
13	103	1,021	645	376	258	44	0	74
14	29	743	660	83	0	0	61	22
15	6	173	73	100	21	39	12	28
16	78	326	200	126	74	25	3	24
17	0	0	0	0	0	0	0	0
18								
19	672	7,425					447	506
20								
21								
22								
23								
24								
25								
26								

Appendix C

Poverty Status in the Past 12 Month - Information for Affected Communities
U.S. Census Report: S1701 Tables **Source:** www.census.gov

Poverty Status Information for Affected Communities
Census Tract 7 and 8
Yuma County, AZ
Table S1701 - 2020 ACS - 5-Year Estimates

	Census Tract 7, Yuma County, Arizona						Census Tract 8, Yuma County, Arizona					
	Total		Below poverty level		Percent below poverty level		Total		Below poverty level		Percent below poverty level	
Label	Estimate	Margin of Error	Estimate	Margin of Error	Estimate	Margin of Error	Estimate	Margin of Error	Estimate	Margin of Error	Estimate	Margin of Error
Population for whom poverty status is determined	3,681	±617	1,212	±408	32.9%	±10.5	5,281	±796	1,018	±367	19.3%	±6.9
AGE												
Under 18 years	948	±318	486	±206	51.3%	±18.0	1,185	±256	401	±207	33.8%	±14.7
Under 5 years	396	±174	324	±165	81.8%	±16.6	523	±219	228	±125	43.6%	±21.2
5 to 17 years	552	±262	162	±100	29.3%	±18.3	662	±120	173	±92	26.1%	±13.0
Related children of householder under 18 years	937	±318	475	±206	50.7%	±18.1	1,177	±256	393	±205	33.4%	±14.8
18 to 64 years	2,350	±407	619	±233	26.3%	±9.9	3,307	±582	586	±242	17.7%	±6.9
18 to 34 years	1,387	±334	386	±186	27.8%	±12.3	1,520	±574	284	±165	18.7%	±10.6
35 to 64 years	963	±222	233	±124	24.2%	±12.1	1,787	±293	302	±171	16.9%	±8.6
60 years and over	547	±152	148	±106	27.1%	±14.6	1,255	±322	151	±159	12.0%	±11.7
65 years and over	383	±134	107	±95	27.9%	±18.7	789	±218	31	±35	3.9%	±4.6
SEX												
Male	2,076	±478	601	±238	28.9%	±11.0	2,599	±495	403	±218	15.5%	±8.0
Female	1,605	±293	611	±227	38.1%	±12.2	2,682	±414	615	±224	22.9%	±7.8
RACE AND HISPANIC OR LATINO ORIGIN												
White alone	2,415	±393	872	±357	36.1%	±12.8	4,002	±483	812	±386	20.3%	±9.1
Black or African American alone	234	±185	87	±70	37.2%	±21.4	88	±63	12	±19	13.6%	±20.6
American Indian and Alaska Native alone	0	±13	0	±13	-	**	0	±19	0	±19	-	**
Asian alone	47	±53	16	±26	34.0%	±59.8	180	±110	1	±2	0.6%	±1.3
Native Hawaiian and Other Pacific Islander alone	0	±13	0	±13	-	**	0	±19	0	±19	-	**
Some other race alone	493	±230	214	±141	43.4%	±23.4	349	±230	140	±149	40.1%	±33.3
Two or more races	492	±465	23	±38	4.7%	±12.2	662	±615	53	±54	8.0%	±12.4
Hispanic or Latino origin (of any race)	3,040	±612	1,118	±405	36.8%	±12.5	3,474	±839	801	±356	23.1%	±9.0
White alone, not Hispanic or Latino	484	±143	94	±83	19.4%	±15.6	1,433	±398	183	±111	12.8%	±8.2
EDUCATIONAL ATTAINMENT												
Population 25 years and over	2,138	±277	629	±237	29.4%	±10.5	3,799	±635	564	±237	14.8%	±6.3
Less than high school graduate	674	±208	316	±136	46.9%	±16.4	588	±209	187	±152	31.8%	±19.9
High school graduate (includes equivalency)	728	±198	164	±117	22.5%	±15.1	1,074	±262	101	±63	9.4%	±5.8
Some college, associate's degree	516	±141	131	±97	25.4%	±15.5	1,057	±247	157	±79	14.9%	±7.8

Poverty Status Information for Affected Communities
Census Tract 7 and 8
Yuma County, AZ
Table S1701 - 2020 ACS - 5-Year Estimates

	Census Tract 7, Yuma County, Arizona						Census Tract 8, Yuma County, Arizona					
	Total		Below poverty level		Percent below poverty level		Total		Below poverty level		Percent below poverty level	
Label	Estimate	Margin of Error	Estimate	Margin of Error	Estimate	Margin of Error	Estimate	Margin of Error	Estimate	Margin of Error	Estimate	Margin of Error
Bachelor's degree or higher	220	±105	18	±29	8.2%	±13.2	1,080	±500	119	±150	11.0%	±13.9
EMPLOYMENT STATUS												
Civilian labor force 16 years and over	1,914	±322	419	±178	21.9%	±9.2	2,514	±548	216	±112	8.6%	±4.5
Employed	1,612	±289	291	±155	18.1%	±9.4	2,198	±403	122	±74	5.6%	±3.6
Male	950	±230	137	±104	14.4%	±10.7	1,201	±343	11	±19	0.9%	±1.6
Female	662	±168	154	±88	23.3%	±12.1	997	±193	111	±74	11.1%	±7.6
Unemployed	302	±132	128	±93	42.4%	±25.0	316	±208	94	±92	29.7%	±28.3
Male	93	±85	57	±65	61.3%	±50.3	76	±68	0	±19	0.0%	±37.7
Female	209	±101	71	±68	34.0%	±26.9	240	±185	94	±92	39.2%	±36.4
WORK EXPERIENCE												
Population 16 years and over	2,785	±428	773	±264	27.8%	±9.2	4,175	±653	625	±244	15.0%	±5.8
Worked full-time, year-round in the past 12 months	1,122	±294	122	±87	10.9%	±7.6	1,599	±399	53	±45	3.3%	±2.8
Worked part-time or part-year in the past 12 months	731	±178	319	±156	43.6%	±17.0	1,015	±252	114	±72	11.2%	±7.2
Did not work	932	±279	332	±152	35.6%	±14.7	1,561	±320	458	±245	29.3%	±13.7
ALL INDIVIDUALS WITH INCOME BELOW THE FOLLOWING POVERTY RATIOS												
50 percent of poverty level	553	±287	(X)	(X)	(X)	(X)	695	±372	(X)	(X)	(X)	(X)
125 percent of poverty level	1,424	±449	(X)	(X)	(X)	(X)	1,321	±417	(X)	(X)	(X)	(X)
150 percent of poverty level	1,576	±461	(X)	(X)	(X)	(X)	1,598	±458	(X)	(X)	(X)	(X)
185 percent of poverty level	2,227	±591	(X)	(X)	(X)	(X)	2,285	±552	(X)	(X)	(X)	(X)
200 percent of poverty level	2,227	±591	(X)	(X)	(X)	(X)	2,501	±572	(X)	(X)	(X)	(X)
300 percent of poverty level	2,926	±574	(X)	(X)	(X)	(X)	3,307	±510	(X)	(X)	(X)	(X)
400 percent of poverty level	3,174	±534	(X)	(X)	(X)	(X)	4,137	±816	(X)	(X)	(X)	(X)
500 percent of poverty level	3,521	±612	(X)	(X)	(X)	(X)	4,466	±808	(X)	(X)	(X)	(X)
UNRELATED INDIVIDUALS FOR WHOM POVERTY STATUS IS DETERMINED	832	±234	227	±118	27.3%	±13.5	1,281	±302	330	±199	25.8%	±13.0
Male	558	±210	126	±84	22.6%	±14.4	702	±232	126	±104	17.9%	±13.9
Female	274	±122	101	±75	36.9%	±23.7	579	±161	204	±118	35.2%	±15.1
15 years	0	±13	0	±13	-	**	0	±19	0	±19	-	**
16 to 17 years	11	±19	11	±19	100.0%	±99.2	8	±14	8	±14	100.0%	±100.0
18 to 24 years	143	±107	16	±26	11.2%	±20.4	68	±53	30	±44	44.1%	±55.9
25 to 34 years	334	±169	94	±74	28.1%	±24.8	280	±117	37	±53	13.2%	±18.0
35 to 44 years	70	±55	18	±28	25.7%	±36.8	139	±116	37	±61	26.6%	±38.4
45 to 54 years	95	±70	37	±45	38.9%	±40.0	112	±73	39	±46	34.8%	±32.5
55 to 64 years	104	±70	31	±39	29.8%	±32.9	404	±188	167	±160	41.3%	±27.6

Poverty Status Information for Affected Communities
Census Tract 7 and 8
Yuma County, AZ
Table S1701 - 2020 ACS - 5-Year Estimates

	Census Tract 7, Yuma County, Arizona						Census Tract 8, Yuma County, Arizona					
	Total		Below poverty level		Percent below poverty level		Total		Below poverty level		Percent below poverty level	
Label	Estimate	Margin of Error	Estimate	Margin of Error	Estimate	Margin of Error	Estimate	Margin of Error	Estimate	Margin of Error	Estimate	Margin of Error
65 to 74 years	50	±34	8	±13	16.0%	±22.8	120	±77	1	±2	0.8%	±2.0
75 years and over	25	±27	12	±18	48.0%	±52.0	150	±117	11	±17	7.3%	±12.8
Mean income deficit for unrelated individuals (dollars)	8,106	±1,838	(X)	(X)	(X)	(X)	9,594	±2,358	(X)	(X)	(X)	(X)
Worked full-time, year-round in the past 12 months	390	±190	0	±13	0.0%	±9.7	452	±148	0	±19	0.0%	±8.5
Worked less than full-time, year-round in the past 12 months	309	±118	140	±94	45.3%	±28.9	220	±127	0	±19	0.0%	±16.6
Did not work	133	±90	87	±81	65.4%	±27.7	609	±243	330	±199	54.2%	±19.5

Poverty Status for Affected Communities
Census Tract 9.01 and 9.07
Yuma County, AZ
Table S1701-2020 ACS - 5-Year Estimates

	Census Tract 9.01, Yuma County, Arizona						Census Tract 9.07, Yuma County, Arizona					
	Total		Below poverty level		Percent below poverty level		Total		Below poverty level		Percent below poverty level	
Label	Estimate	Margin of Error	Estimate	Margin of Error	Estimate	Margin of Error	Estimate	Margin of Error	Estimate	Margin of Error	Estimate	Margin of Error
Population for whom poverty status is determined	3,439	±717	694	±424	20.2%	±11.8	5,749	±575	1,179	±514	20.5%	±8.2
AGE												
Under 18 years	808	±278	404	±307	50.0%	±28.7	1,577	±304	530	±315	33.6%	±16.3
Under 5 years	163	±143	112	±138	68.7%	±47.0	525	±256	280	±206	53.3%	±28.0
5 to 17 years	645	±202	292	±220	45.3%	±27.9	1,052	±215	250	±180	23.8%	±15.6
Related children of householder under 18 years	808	±278	404	±307	50.0%	±28.7	1,577	±304	530	±315	33.6%	±16.3
18 to 64 years	2,000	±572	221	±125	11.1%	±6.3	3,566	±383	570	±249	16.0%	±6.7
18 to 34 years	819	±281	137	±105	16.7%	±11.9	1,687	±375	235	±151	13.9%	±8.1
35 to 64 years	1,181	±386	84	±82	7.1%	±7.5	1,879	±245	335	±171	17.8%	±8.8
60 years and over	1,046	±374	69	±50	6.6%	±5.3	844	±208	152	±112	18.0%	±14.0
65 years and over	631	±156	69	±50	10.9%	±7.6	606	±169	79	±93	13.0%	±15.8
SEX												
Male	1,499	±352	247	±206	16.5%	±12.7	2,774	±378	556	±258	20.0%	±8.6
Female	1,940	±480	447	±294	23.0%	±13.8	2,975	±404	623	±339	20.9%	±10.4
RACE AND HISPANIC OR LATINO ORIGIN												
White alone	2,639	±695	423	±339	16.0%	±12.1	4,112	±560	791	±425	19.2%	±9.9
Black or African American alone	230	±214	134	±203	58.3%	±49.0	454	±225	61	±85	13.4%	±16.1
American Indian and Alaska Native alone	124	±87	70	±65	56.5%	±46.4	132	±193	117	±191	88.6%	±29.1
Asian alone	12	±20	0	±13	0.0%	±95.0	247	±149	0	±19	0.0%	±14.9
Native Hawaiian and Other Pacific Islander alone	0	±13	0	±13	-	**	0	±19	0	±19	-	**
Some other race alone	147	±140	9	±15	6.1%	±14.3	380	±270	36	±33	9.5%	±11.0
Two or more races	287	±186	58	±74	20.2%	±27.5	424	±323	174	±191	41.0%	±22.9
Hispanic or Latino origin (of any race)	1,717	±440	521	±388	30.3%	±21.0	3,785	±656	929	±429	24.5%	±9.9
White alone, not Hispanic or Latino	1,476	±491	103	±68	7.0%	±4.1	1,190	±298	156	±161	13.1%	±12.9
EDUCATIONAL ATTAINMENT												
Population 25 years and over	2,232	±527	254	±133	11.4%	±6.4	3,431	±299	488	±247	14.2%	±7.0

Poverty Status for Affected Communities
Census Tract 9.01 and 9.07
Yuma County, AZ
Table S1701-2020 ACS - 5-Year Estimates

	Census Tract 9.01, Yuma County, Arizona						Census Tract 9.07, Yuma County, Arizona					
	Total		Below poverty level		Percent below poverty level		Total		Below poverty level		Percent below poverty level	
Label	Estimate	Margin of Error	Estimate	Margin of Error	Estimate	Margin of Error	Estimate	Margin of Error	Estimate	Margin of Error	Estimate	Margin of Error
UNRELATED INDIVIDUALS FOR WHOM POVERTY STATUS IS DETERMINED	541	±202	78	±57	14.4%	±9.2	841	±291	136	±184	16.2%	±20.4
Male	185	±84	9	±15	4.9%	±8.1	474	±194	64	±93	13.5%	±19.1
Female	356	±168	69	±51	19.4%	±13.5	367	±138	72	±92	19.6%	±22.7
15 years	0	±13	0	±13	-	**	0	±19	0	±19	-	**
16 to 17 years	0	±13	0	±13	-	**	0	±19	0	±19	-	**
18 to 24 years	25	±37	25	±37	100.0%	±65.8	190	±165	2	±4	1.1%	±2.8
25 to 34 years	61	±77	14	±22	23.0%	±15.2	244	±159	0	±19	0.0%	±15.1
35 to 44 years	28	±28	0	±13	0.0%	±62.2	157	±114	64	±93	40.8%	±45.3
45 to 54 years	10	±16	0	±13	0.0%	±100.0	143	±93	0	±19	0.0%	±24.1
55 to 64 years	142	±129	0	±13	0.0%	±24.2	21	±24	6	±11	28.6%	±52.1
65 to 74 years	58	±44	17	±27	29.3%	±38.3	5	±9	0	±19	0.0%	±100.0
75 years and over	217	±98	22	±27	10.1%	±11.8	81	±93	64	±92	79.0%	±42.9
Mean income deficit for unrelated individuals (dollars)	N	N	(X)	(X)	(X)	(X)	N	N	(X)	(X)	(X)	(X)
Worked full-time, year-round in the past 12 months	124	±127	0	±13	0.0%	±27.0	516	±192	0	±19	0.0%	±7.5
Worked less than full-time, year-round in the past 12 months	145	±77	39	±43	26.9%	±22.7	152	±143	0	±19	0.0%	±22.9
Did not work	272	±107	39	±38	14.3%	±13.2	173	±186	136	±184	78.6%	±35.8

Poverty Status Information for Affected Communities
Census Tract 10.01 and 10.13
Yuma County, AZ
Table S 1701 - 2020 ACS - 5-Year Estimates

	Census Tract 10.01, Yuma County, Arizona						Census Tract 10.03, Yuma County, Arizona					
	Total		Below poverty level		Percent below poverty level		Total		Below poverty level		Percent below poverty level	
Label	Estimate	Margin of Error	Estimate	Margin of Error	Estimate	Margin of Error	Estimate	Margin of Error	Estimate	Margin of Error	Estimate	Margin of Error
Population for whom poverty status is determined	2,600	±449	386	±192	14.8%	±7.0	822	±229	233	±97	28.3%	±12.4
AGE												
Under 18 years	180	±100	0	±13	0.0%	±19.8	123	±83	11	±15	8.9%	±13.0
Under 5 years	0	±13	0	±13	-	**	17	±19	0	±13	0.0%	±79.8
5 to 17 years	180	±100	0	±13	0.0%	±19.8	106	±79	11	±15	10.4%	±15.1
Related children of householder under 18 years	180	±100	0	±13	0.0%	±19.8	123	±83	11	±15	8.9%	±13.0
18 to 64 years	972	±249	270	±169	27.8%	±15.7	398	±149	81	±55	20.4%	±15.8
18 to 34 years	250	±158	68	±111	27.2%	±36.4	249	±122	54	±44	21.7%	±21.7
35 to 64 years	722	±204	202	±129	28.0%	±15.8	149	±52	27	±24	18.1%	±16.0
60 years and over	1,615	±352	184	±98	11.4%	±6.1	348	±95	149	±74	42.8%	±15.4
65 years and over	1,448	±346	116	±66	8.0%	±4.8	301	±90	141	±73	46.8%	±16.2
SEX												
Male	1,197	±199	175	±101	14.6%	±8.1	409	±175	87	±60	21.3%	±15.6
Female	1,403	±339	211	±135	15.0%	±9.0	413	±85	146	±62	35.4%	±13.2
RACE AND HISPANIC OR LATINO ORIGIN												
White alone	2,076	±378	318	±158	15.3%	±7.4	508	±137	136	±70	26.8%	±14.6
Black or African American alone	33	±56	0	±13	0.0%	±57.3	2	±4	2	±4	100.0%	±100.0
American Indian and Alaska Native alone	55	±62	0	±13	0.0%	±44.4	0	±13	0	±13	-	**
Asian alone	21	±27	0	±13	0.0%	±71.8	11	±15	11	±15	100.0%	±99.2
Native Hawaiian and Other Pacific Islander alone	18	±22	0	±13	0.0%	±77.5	6	±9	0	±13	0.0%	±100.0
Some other race alone	236	±198	68	±111	28.8%	±41.5	231	±178	84	±72	36.4%	±27.9
Two or more races	161	±180	0	±13	0.0%	±21.8	64	±94	0	±13	0.0%	±41.1
Hispanic or Latino origin (of any race)	951	±289	219	±154	23.0%	±15.9	560	±218	140	±87	25.0%	±16.1
White alone, not Hispanic or Latino	1,515	±353	167	±116	11.0%	±7.2	249	±81	80	±45	32.1%	±14.8
EDUCATIONAL ATTAINMENT												
Population 25 years and over	2,281	±415	318	±158	13.9%	±6.6	561	±102	208	±91	37.1%	±13.3
Less than high school graduate	432	±200	95	±76	22.0%	±16.6	130	±70	80	±64	61.5%	±26.1

Poverty Status Information for Affected Communities
Census Tract 10.01 and 10.13
Yuma County, AZ
Table S 1701 - 2020 ACS - 5-Year Estimates

	Census Tract 10.01, Yuma County, Arizona						Census Tract 10.03, Yuma County, Arizona					
	Total		Below poverty level		Percent below poverty level		Total		Below poverty level		Percent below poverty level	
Label	Estimate	Margin of Error	Estimate	Margin of Error	Estimate	Margin of Error	Estimate	Margin of Error	Estimate	Margin of Error	Estimate	Margin of Error
High school graduate (includes equivalency)	636	±167	138	±99	21.7%	±12.7	197	±60	82	±51	41.6%	±18.9
Some college, associate's degree	806	±293	82	±63	10.2%	±7.8	188	±55	46	±34	24.5%	±15.2
Bachelor's degree or higher	407	±130	3	±5	0.7%	±1.2	46	±30	0	±13	0.0%	±48.5
EMPLOYMENT STATUS												
Civilian labor force 16 years and over	724	±215	98	±120	13.5%	±15.1	300	±83	58	±45	19.3%	±16.7
Employed	648	±190	66	±72	10.2%	±11.0	289	±83	52	±44	18.0%	±16.8
Male	321	±95	30	±40	9.3%	±11.8	142	±52	27	±29	19.0%	±23.1
Female	327	±143	36	±59	11.0%	±16.6	147	±56	25	±36	17.0%	±22.4
Unemployed	76	±64	32	±53	42.1%	±48.5	11	±12	6	±9	54.5%	±54.5
Male	44	±37	0	±13	0.0%	±49.6	5	±7	0	±13	0.0%	±100.0
Female	32	±53	32	±53	100.0%	±58.2	6	±9	6	±9	100.0%	±100.0
WORK EXPERIENCE												
Population 16 years and over	2,460	±449	386	±192	15.7%	±7.2	699	±179	222	±91	31.8%	±13.0
Worked full-time, year-round in the past 12 months	424	±178	0	±13	0.0%	±9.0	172	±70	0	±13	0.0%	±20.6
Worked part-time or part-year in the past 12 months	386	±154	118	±122	30.6%	±22.8	132	±48	62	±52	47.0%	±32.1
Did not work	1,650	±393	268	±145	16.2%	±8.2	395	±141	160	±76	40.5%	±17.8
ALL INDIVIDUALS WITH INCOME BELOW THE FOLLOWING POVERTY RATIOS												
50 percent of poverty level	162	±111	(X)	(X)	(X)	(X)	123	±73	(X)	(X)	(X)	(X)
125 percent of poverty level	618	±300	(X)	(X)	(X)	(X)	248	±97	(X)	(X)	(X)	(X)
150 percent of poverty level	703	±312	(X)	(X)	(X)	(X)	259	±99	(X)	(X)	(X)	(X)
185 percent of poverty level	1,019	±389	(X)	(X)	(X)	(X)	301	±99	(X)	(X)	(X)	(X)
200 percent of poverty level	1,073	±393	(X)	(X)	(X)	(X)	437	±217	(X)	(X)	(X)	(X)
300 percent of poverty level	1,489	±412	(X)	(X)	(X)	(X)	638	±225	(X)	(X)	(X)	(X)
400 percent of poverty level	1,827	±406	(X)	(X)	(X)	(X)	679	±235	(X)	(X)	(X)	(X)
500 percent of poverty level	1,950	±407	(X)	(X)	(X)	(X)	753	±230	(X)	(X)	(X)	(X)
UNRELATED INDIVIDUALS FOR WHOM POVERTY STATUS IS DETERMINED	820	±278	191	±137	23.3%	±14.2	242	±59	159	±58	65.7%	±15.1
Male	307	±108	77	±70	25.1%	±18.1	62	±35	36	±28	58.1%	±28.5
Female	513	±258	114	±118	22.2%	±21.0	180	±57	123	±56	68.3%	±17.7

Poverty Status Information for Affected Communities
Census Tract 10.01 and 10.13
Yuma County, AZ
Table S 1701 - 2020 ACS - 5-Year Estimates

	Census Tract 10.01, Yuma County, Arizona						Census Tract 10.03, Yuma County, Arizona					
	Total		Below poverty level		Percent below poverty level		Total		Below poverty level		Percent below poverty level	
Label	Estimate	Margin of Error	Estimate	Margin of Error	Estimate	Margin of Error	Estimate	Margin of Error	Estimate	Margin of Error	Estimate	Margin of Error
15 years	0	±13	0	±13	-	**	0	±13	0	±13	-	**
16 to 17 years	0	±13	0	±13	-	**	0	±13	0	±13	-	**
18 to 24 years	68	±111	68	±111	100.0%	±39.9	23	±23	14	±20	60.9%	±55.7
25 to 34 years	27	±36	0	±13	0.0%	±63.3	38	±32	25	±36	65.8%	±52.5
35 to 44 years	41	±43	30	±40	73.2%	±44.9	0	±13	0	±13	-	**
45 to 54 years	30	±27	0	±13	0.0%	±60.1	6	±9	0	±13	0.0%	±100.0
55 to 64 years	96	±70	52	±57	54.2%	±34.9	26	±25	17	±21	65.4%	±45.3
65 to 74 years	222	±102	20	±30	9.0%	±12.1	80	±40	44	±35	55.0%	±28.5
75 years and over	336	±214	21	±24	6.3%	±8.8	69	±39	59	±36	85.5%	±21.0
Mean income deficit for unrelated individuals (dollars)	4,672	±1,087	(X)	(X)	(X)	(X)	6,463	±1,635	(X)	(X)	(X)	(X)
Worked full-time, year-round in the past 12 months	79	±47	0	±13	0.0%	±36.9	36	±23	0	±13	0.0%	±54.8
Worked less than full-time, year-round in the past 12 months	232	±133	110	±121	47.4%	±31.7	44	±39	37	±39	84.1%	±29.2
Did not work	509	±225	81	±63	15.9%	±12.5	162	±53	122	±49	75.3%	±15.8

Poverty Status Information for Affected Communities
Census Tract 10.04 and 11
Yuma County, AZ
Table S1701 - 2020 ACS - 5-Year Estimates

	Census Tract 10.04, Yuma County, Arizona						Census Tract 11, Yuma County, Arizona					
	Total		Below poverty level		Percent below poverty level		Total		Below poverty level		Percent below poverty level	
Label	Estimate	Margin of Error	Estimate	Margin of Error	Estimate	Margin of Error	Estimate	Margin of Error	Estimate	Margin of Error	Estimate	Margin of Error
Population for whom poverty status is determined	2,233	±576	698	±311	31.3%	±13.4	5,753	±847	1,142	±506	19.9%	±7.9
AGE												
Under 18 years	604	±233	211	±121	34.9%	±20.2	1,515	±349	272	±306	18.0%	±18.2
Under 5 years	136	±78	55	±59	40.4%	±35.1	610	±230	121	±141	19.8%	±21.9
5 to 17 years	468	±206	156	±96	33.3%	±21.5	905	±266	151	±193	16.7%	±19.8
Related children of householder under 18 years	604	±233	211	±121	34.9%	±20.2	1,515	±349	272	±306	18.0%	±18.2
18 to 64 years	1,328	±325	432	±206	32.5%	±13.8	3,533	±695	634	±300	17.9%	±7.5
18 to 34 years	633	±192	265	±172	41.9%	±18.8	2,225	±658	348	±240	15.6%	±9.5
35 to 64 years	695	±215	167	±67	24.0%	±11.3	1,308	±268	286	±144	21.9%	±10.3
60 years and over	430	±155	110	±54	25.6%	±12.2	1,041	±312	334	±211	32.1%	±16.3
65 years and over	301	±93	55	±39	18.3%	±11.4	705	±240	236	±170	33.5%	±19.1
SEX												
Male	1,190	±292	351	±188	29.5%	±14.2	2,876	±682	560	±329	19.5%	±9.2
Female	1,043	±326	347	±150	33.3%	±14.8	2,877	±592	582	±467	20.2%	±13.6
RACE AND HISPANIC OR LATINO ORIGIN												
White alone	1,433	±303	627	±306	43.8%	±15.2	3,913	±891	673	±419	17.2%	±8.9
Black or African American alone	48	±37	16	±25	33.3%	±42.2	47	±60	1	±3	2.1%	±10.5
American Indian and Alaska Native alone	108	±169	0	±13	0.0%	±30.0	36	±37	36	±37	100.0%	±54.8
Asian alone	47	±39	5	±7	10.6%	±19.9	0	±19	0	±19	-	**
Native Hawaiian and Other Pacific Islander alone	0	±13	0	±13	-	**	0	±19	0	±19	-	**
Some other race alone	497	±438	46	±32	9.3%	±11.1	1,311	±466	326	±412	24.9%	±27.5
Two or more races	100	±73	4	±7	4.0%	±8.0	446	±329	106	±172	23.8%	±32.5
Hispanic or Latino origin (of any race)	1,631	±496	543	±280	33.3%	±16.1	3,985	±716	737	±450	18.5%	±9.9
White alone, not Hispanic or Latino	486	±136	134	±80	27.6%	±14.9	1,669	±433	383	±286	22.9%	±15.0
EDUCATIONAL ATTAINMENT												
Population 25 years and over	1,386	±307	410	±179	29.6%	±11.8	3,303	±461	633	±289	19.2%	±7.8

Poverty Status Information for Affected Communities
Census Tract 10.04 and 11
Yuma County, AZ
Table S1701 - 2020 ACS - 5-Year Estimates

	Census Tract 10.04, Yuma County, Arizona						Census Tract 11, Yuma County, Arizona					
	Total		Below poverty level		Percent below poverty level		Total		Below poverty level		Percent below poverty level	
Label	Estimate	Margin of Error	Estimate	Margin of Error	Estimate	Margin of Error	Estimate	Margin of Error	Estimate	Margin of Error	Estimate	Margin of Error
Less than high school graduate	365	±133	104	±58	28.5%	±15.6	699	±298	260	±211	37.2%	±23.9
High school graduate (includes equivalency)	426	±138	173	±112	40.6%	±17.4	866	±232	202	±109	23.3%	±13.5
Some college, associate's degree	467	±143	109	±59	23.3%	±12.3	1,129	±336	91	±101	8.1%	±8.5
Bachelor's degree or higher	128	±58	24	±27	18.8%	±19.6	609	±256	80	±114	13.1%	±16.9
EMPLOYMENT STATUS												
Civilian labor force 16 years and over	881	±198	241	±155	27.4%	±15.5	2,579	±593	404	±261	15.7%	±8.8
Employed	804	±194	198	±146	24.6%	±16.1	2,328	±635	318	±282	13.7%	±10.2
Male	525	±146	128	±108	24.4%	±18.1	1,306	±507	233	±262	17.8%	±16.2
Female	279	±88	70	±56	25.1%	±17.0	1,022	±299	85	±73	8.3%	±6.6
Unemployed	77	±42	43	±33	55.8%	±29.4	251	±169	86	±111	34.3%	±35.9
Male	34	±24	16	±19	47.1%	±36.3	117	±126	0	±19	0.0%	±28.2
Female	43	±33	27	±23	62.8%	±44.5	134	±104	86	±111	64.2%	±46.1
WORK EXPERIENCE												
Population 16 years and over	1,648	±373	492	±213	29.9%	±12.1	4,256	±769	883	±379	20.7%	±7.2
Worked full-time, year-round in the past 12 months	547	±141	56	±42	10.2%	±8.0	1,920	±593	194	±254	10.1%	±11.7
Worked part-time or part-year in the past 12 months	355	±136	168	±118	47.3%	±22.0	847	±270	193	±146	22.8%	±19.3
Did not work	746	±236	268	±100	35.9%	±13.8	1,489	±482	496	±276	33.3%	±13.5
ALL INDIVIDUALS WITH INCOME BELOW THE FOLLOWING POVERTY RATIOS												
50 percent of poverty level	331	±170	(X)	(X)	(X)	(X)	247	±134	(X)	(X)	(X)	(X)
125 percent of poverty level	767	±312	(X)	(X)	(X)	(X)	1,592	±576	(X)	(X)	(X)	(X)
150 percent of poverty level	1,180	±519	(X)	(X)	(X)	(X)	2,144	±823	(X)	(X)	(X)	(X)
185 percent of poverty level	1,480	±507	(X)	(X)	(X)	(X)	3,098	±785	(X)	(X)	(X)	(X)
200 percent of poverty level	1,555	±507	(X)	(X)	(X)	(X)	3,268	±745	(X)	(X)	(X)	(X)
300 percent of poverty level	1,954	±597	(X)	(X)	(X)	(X)	4,473	±937	(X)	(X)	(X)	(X)
400 percent of poverty level	2,088	±578	(X)	(X)	(X)	(X)	4,598	±914	(X)	(X)	(X)	(X)
500 percent of poverty level	2,112	±578	(X)	(X)	(X)	(X)	4,942	±823	(X)	(X)	(X)	(X)

Poverty Status Information for Affected Communities
Census Tract 10.04 and 11
Yuma County, AZ
Table S1701 - 2020 ACS - 5-Year Estimates

	Census Tract 10.04, Yuma County, Arizona						Census Tract 11, Yuma County, Arizona					
	Total		Below poverty level		Percent below poverty level		Total		Below poverty level		Percent below poverty level	
Label	Estimate	Margin of Error	Estimate	Margin of Error	Estimate	Margin of Error	Estimate	Margin of Error	Estimate	Margin of Error	Estimate	Margin of Error
UNRELATED INDIVIDUALS FOR WHOM POVERTY STATUS IS DETERMINED	620	±187	145	±60	23.4%	±10.2	1,256	±520	415	±288	33.0%	±14.2
Male	391	±174	78	±45	19.9%	±12.7	823	±476	300	±275	36.5%	±19.0
Female	229	±75	67	±45	29.3%	±15.9	433	±167	115	±77	26.6%	±16.0
15 years	0	±13	0	±13	-	**	0	±19	0	±19	-	**
16 to 17 years	0	±13	0	±13	-	**	0	±19	0	±19	-	**
18 to 24 years	20	±34	0	±13	0.0%	±73.6	411	±444	227	±258	55.2%	±12.4
25 to 34 years	134	±67	37	±38	27.6%	±24.8	409	±234	43	±50	10.5%	±12.6
35 to 44 years	100	±118	0	±13	0.0%	±31.7	36	±44	36	±44	100.0%	±54.8
45 to 54 years	114	±55	32	±35	28.1%	±26.1	48	±41	11	±19	22.9%	±34.9
55 to 64 years	80	±41	43	±29	53.8%	±24.6	143	±96	68	±84	47.6%	±40.1
65 to 74 years	92	±51	9	±15	9.8%	±15.8	129	±82	29	±35	22.5%	±26.5
75 years and over	80	±43	24	±25	30.0%	±24.5	80	±60	1	±5	1.3%	±7.6
Mean income deficit for unrelated individuals (dollars)	7,281	±2,167	(X)	(X)	(X)	(X)	6,261	±1,379	(X)	(X)	(X)	(X)
Worked full-time, year-round in the past 12 months	285	±139	18	±28	6.3%	±10.6	736	±464	194	±254	26.4%	±24.3
Worked less than full-time, year-round in the past 12 months	67	±41	26	±29	38.8%	±34.4	221	±144	77	±68	34.8%	±27.6
Did not work	268	±76	101	±45	37.7%	±14.1	299	±133	144	±90	48.2%	±22.1

Poverty Status Information for Affected Communities
Census Tract 12
Yuma County, AZ
Table S1701 2020 ACS - 5-Year Estimates

	Census Tract 12, Yuma County, Arizona					
	Total		Below poverty level		Percent below poverty level	
Label	Estimate	Margin of Error	Estimate	Margin of Error	Estimate	Margin of Error
Population for whom poverty status is determined	3,677	±748	210	±127	5.7%	±3.6
AGE						
Under 18 years	949	±311	0	±13	0.0%	±4.1
Under 5 years	451	±323	0	±13	0.0%	±8.5
5 to 17 years	498	±162	0	±13	0.0%	±7.7
Related children of householder under 18 years	949	±311	0	±13	0.0%	±4.1
18 to 64 years	1,886	±446	105	±65	5.6%	±3.6
18 to 34 years	871	±446	32	±37	3.7%	±4.7
35 to 64 years	1,015	±184	73	±55	7.2%	±5.4
60 years and over	1,048	±187	135	±91	12.9%	±8.6
65 years and over	842	±182	105	±85	12.5%	±10.0
SEX						
Male	1,724	±299	110	±65	6.4%	±3.8
Female	1,953	±499	100	±82	5.1%	±4.4
RACE AND HISPANIC OR LATINO ORIGIN						
White alone	2,445	±280	187	±122	7.6%	±5.0
Black or African American alone	5	±9	0	±13	0.0%	±100.0
American Indian and Alaska Native alone	23	±25	11	±19	47.8%	±52.2
Asian alone	87	±75	0	±13	0.0%	±34.9
Native Hawaiian and Other Pacific Islander alone	0	±13	0	±13	-	**
Some other race alone	294	±236	12	±20	4.1%	±8.3
Two or more races	823	±710	0	±13	0.0%	±4.7
Hispanic or Latino origin (of any race)	1,771	±706	28	±31	1.6%	±2.1

Poverty Status Information for Affected Communities
Census Tract 12
Yuma County, AZ
Table S1701 2020 ACS - 5-Year Estimates

	Census Tract 12, Yuma County, Arizona					
	Total		Below poverty level		Percent below poverty level	
Label	Estimate	Margin of Error	Estimate	Margin of Error	Estimate	Margin of Error
White alone, not Hispanic or Latino	1,586	±260	171	±120	10.8%	±7.3
EDUCATIONAL ATTAINMENT						
Population 25 years and over	2,452	±475	179	±122	7.3%	±5.2
Less than high school graduate	216	±118	15	±22	6.9%	±9.9
High school graduate (includes equivalency)	729	±188	116	±112	15.9%	±13.6
Some college, associate's degree	936	±285	29	±35	3.1%	±3.9
Bachelor's degree or higher	571	±247	19	±24	3.3%	±4.5
EMPLOYMENT STATUS						
Civilian labor force 16 years and over	1,534	±442	31	±30	2.0%	±2.1
Employed	1,469	±437	31	±30	2.1%	±2.2
Male	750	±242	23	±28	3.1%	±4.0
Female	719	±231	8	±12	1.1%	±1.7
Unemployed	65	±46	0	±13	0.0%	±40.8
Male	37	±32	0	±13	0.0%	±54.1
Female	28	±32	0	±13	0.0%	±62.2
WORK EXPERIENCE						
Population 16 years and over	2,783	±477	210	±127	7.5%	±4.7
Worked full-time, year-round in the past 12 months	1,144	±438	12	±20	1.0%	±2.0
Worked part-time or part-year in the past 12 months	408	±121	32	±32	7.8%	±7.5
Did not work	1,231	±202	166	±119	13.5%	±9.0
ALL INDIVIDUALS WITH INCOME BELOW THE FOLLOWING POVERTY RATIOS						

Poverty Status Information for Affected Communities
Census Tract 12
Yuma County, AZ
Table S1701 2020 ACS - 5-Year Estimates

	Census Tract 12, Yuma County, Arizona					
	Total		Below poverty level		Percent below poverty level	
Label	Estimate	Margin of Error	Estimate	Margin of Error	Estimate	Margin of Error
50 percent of poverty level	64	±46	(X)	(X)	(X)	(X)
125 percent of poverty level	511	±263	(X)	(X)	(X)	(X)
150 percent of poverty level	599	±260	(X)	(X)	(X)	(X)
185 percent of poverty level	951	±323	(X)	(X)	(X)	(X)
200 percent of poverty level	1,020	±335	(X)	(X)	(X)	(X)
300 percent of poverty level	1,781	±314	(X)	(X)	(X)	(X)
400 percent of poverty level	2,817	±701	(X)	(X)	(X)	(X)
500 percent of poverty level	3,225	±695	(X)	(X)	(X)	(X)
UNRELATED INDIVIDUALS FOR WHOM POVERTY STATUS IS DETERMINED	423	±126	132	±77	31.2%	±15.7
Male	255	±94	78	±50	30.6%	±18.1
Female	168	±79	54	±54	32.1%	±24.7
15 years	0	±13	0	±13	-	**
16 to 17 years	0	±13	0	±13	-	**
18 to 24 years	31	±37	31	±37	100.0%	±59.1
25 to 34 years	1	±3	1	±3	100.0%	±100.0
35 to 44 years	81	±71	0	±13	0.0%	±36.4
45 to 54 years	6	±6	3	±4	50.0%	±50.0
55 to 64 years	64	±39	30	±30	46.9%	±31.0
65 to 74 years	103	±66	43	±51	41.7%	±34.7
75 years and over	137	±72	24	±28	17.5%	±18.9
Mean income deficit for unrelated individuals (dollars)	6,649	±2,379	(X)	(X)	(X)	(X)
Worked full-time, year-round in the past 12 months	83	±60	12	±20	14.5%	±26.5
Worked less than full-time, year-round in the past 12 months	87	±64	24	±29	27.6%	±26.9
Did not work	253	±95	96	±66	37.9%	±20.8

Table: ACSST5Y2020.S1701

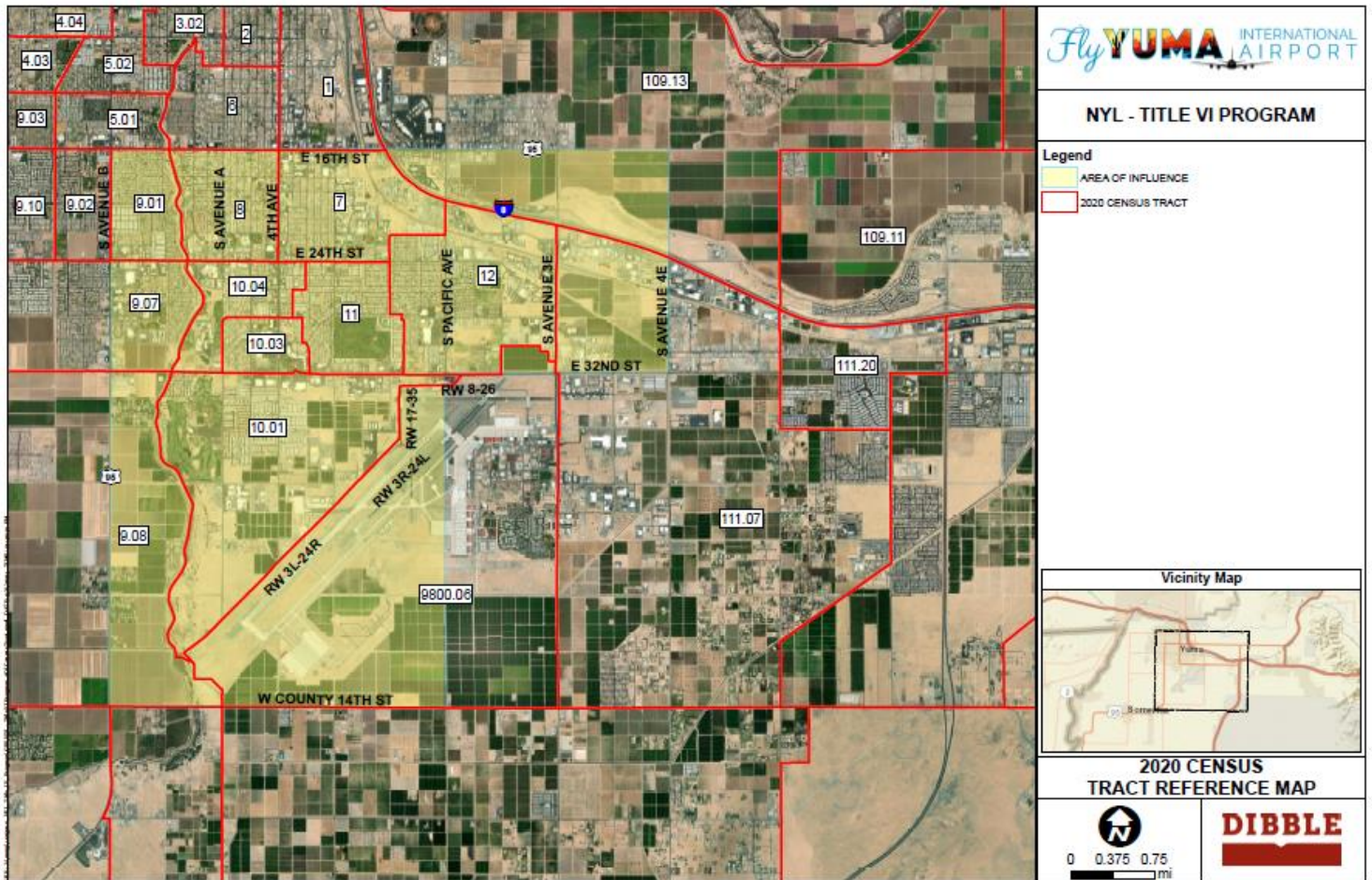
WEB ADDRESS	https://data.census.gov/table/ACSST5Y2020.S1701?q=%20s1701&g=040XX00US04_050XX00US04027_1400000US04027000700,04027000800,04027000901,04027000907,04027000908,04027001001,04027001003,04027001004,04027001100,04027001200
TABLE NOTES	
	Although the American Community Survey (ACS) produces population, demographic and housing unit estimates, for 2020, the 2020 Census provides the official counts of the population and housing units for the nation, states, counties, cities, and towns. For 2016 to 2019, the Population Estimates Program provides estimates of the population for the nation, states, counties, cities, and towns and intercensal housing unit estimates for the nation, states, and counties.
	Supporting documentation on code lists, subject definitions, data accuracy, and statistical testing can be found on the American Community Survey website in the Technical Documentation section. Sample size and data quality measures (including coverage rates, allocation rates, and response rates) can be found on the American Community Survey website in the Methodology section.
	Source: U.S. Census Bureau, 2016-2020 American Community Survey 5-Year Estimates
	Data are based on a sample and are subject to sampling variability. The degree of uncertainty for an estimate arising from sampling variability is represented through the use of a margin of error. The value shown here is the 90 percent margin of error. The margin of error can be interpreted roughly as providing a 90 percent probability that the interval defined by the estimate minus the margin of error and the estimate plus the margin of error (the lower and upper confidence bounds) contains the true value. In addition to sampling variability, the ACS estimates are subject to nonsampling error (for a discussion of nonsampling variability, see ACS Technical Documentation). The effect of nonsampling error is not represented
	Dollar amounts are adjusted to respective calendar years. For more information, see: Change to Income Deficit.
	The 2016-2020 American Community Survey (ACS) data generally reflect the September 2018 Office of Management and Budget (OMB) delineations of metropolitan and micropolitan statistical areas. In certain instances, the names, codes, and boundaries of the principal cities shown in ACS tables may differ from the OMB delineation lists due to differences in the effective dates of the geographic entities.
	Estimates of urban and rural populations, housing units, and characteristics reflect boundaries of urban areas defined based on Census 2010 data. As a result, data for urban and rural areas from the ACS do not necessarily reflect the results of ongoing urbanization.

Table: ACSST5Y2020.S1701

	Explanation of Symbols:- The estimate could not be computed because there were an insufficient number of sample observations. For a ratio of medians estimate, one or both of the median estimates falls in the lowest interval or highest interval of an open-ended distribution.N The estimate or margin of error cannot be displayed because there were an insufficient number of sample cases in the selected geographic area. (X) The estimate or margin of error is not applicable or not available.median- The median falls in the lowest interval of an open-ended distribution (for example "2,500-")median+ The median falls in the highest interval of an open-ended distribution (for example "250,000+").** The margin of error could not be computed because there were an insufficient number of sample observations.*** The margin of error could not be computed because the median falls in the lowest interval or highest interval of an open-ended distribution.***** A margin of error is not appropriate because the corresponding estimate is controlled to an independent population or housing unit. Effect of the open-ended distribution on the median estimate is not shown.
COLUMN NOTES	None

Appendix D

Area of Influence – Community Statistics

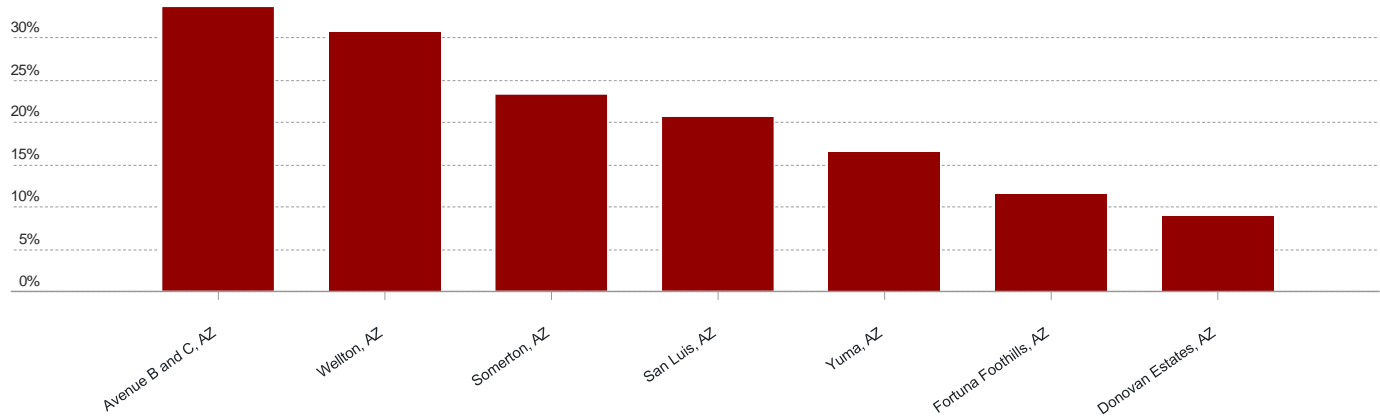


Appendix E

Transit Services – Minority and Disadvantaged Communities

Ranking by Population (Below Poverty Level)

All Cities in Yuma County, per capita



Rank	City	%
1	Avenue B and C, AZ	33.55
2	Wellton, AZ	30.53
3	Somerton, AZ	23.27
4	San Luis, AZ	20.50
5	Yuma, AZ	16.43
6	Fortuna Foothills, AZ	11.42
7	Donovan Estates, AZ	8.80

Powered by Google's [Data Commons](#)

[Terms of Use](#) > [Privacy Policy](#) > [Contact Us](#) >

Appendix F

Selected Definitions

Title VI: Title VI Policy Statement

“No person in the United States shall, on the ground of race, color, or national origin, be excluded from participation in, be denied the benefits of, or be subjected to discrimination under any program or activity receiving Federal financial assistance.”

Title VI Program: Title VI Policy Statement

23 C.F.R. § 200.5(p) Title VI Program. The system of requirements developed to implement Title VI of the Civil Rights Act of 1964. References in this part to Title VI requirements and regulations shall not be limited to only Title VI of the Civil Rights Act of 1964. Where appropriate, this term also refers to the civil rights provisions of other Federal statutes to the extent that they prohibit discrimination on the grounds of race, color, sex, or national origin in programs receiving Federal financial assistance of the type subject to Title VI itself.

Recipient: 2. Administration

A recipient is an entity that receives financial assistance from a federal agency.

Subrecipients: 2. Administration

Recipient entities administer a federally assisted program and receive federal financial assistance from primary recipients.

Demographic Groups: 6. Community Statistics

The US Census recognizes nine demographic group:

- White alone
- Black or African American alone
- American Indian or Alaska Native alone
- Asian alone
- Native Hawaiian or Other Pacific Islander alone
- Some other race alone
- Two or more races
- Hispanic or Latino Origin
- White alone, Not Hispanic or Latino

Limited English Proficiency Plan. (LEP): 6. Community Statistics

Executive Order 13166 (implementing Lau v. Nichols, 414 U.S. 563 (1974), which held disparate impact based on language access can constitute national origin discrimination).